

Kyocera Driver Installation

Basic instruction to add a printer to computer using standard defaults

Download driver from our website
www.adcchico.com

Advanced Document Concepts - Mozilla Firefox
File Edit View History Bookmarks Tools Help
Advanced Document Concepts +
www.advanceddocumentconcepts.com/downloads.php
LDAP Exam Collection Kyocera KDAConnect MPS Shared Server MSpartner Account Dropbox GO Daddy Xerox Dell 2950 PowerEdge F... HTML Tutorial DMS Link Validation

MAILING SOLUTIONS
OKI
PRINTING SOLUTIONS

Scanner File Utility and Instructions
[File Utility for Legacy Hardware](#)

FTP Scanning Configuration
This PDF contains instructions for setting up scanning via FTP.
[FTPConfiguration.pdf](#)

SMB Scanning Configuration
This PDF contains instructions for setting up scanning via SMB.
[SMBConfiguration.pdf](#)

User Performed Adjustments
This PDF contains instructions for performing the User Adjustments on a KM-C2525(E), KM-C3225(E), KM-C3232(E) or KM-C4035E.
[UserAdjustmentsVoyager.pdf](#)
This PDF contains instructions for performing the User Adjustments on a TA-250ci, TA-300ci, TA-400ci, TA-500ci or TA-552ci.
[UserAdjustmentsTAGen1.pdf](#)
This PDF contains instructions for performing the User Adjustments on a TA-3050ci, TA-3550ci, TA-4550ci or TA-5550ci.
[UserAdjustmentsTAGen2.pdf](#)

Kyocera Windows Universal 32/ 64 Bit Driver
This is the most recent version of the Kyocera KX driver, and will allow for printing to most of Kyocera's product line. Driver is for PC's running either 32 or 64-bit versions of Windows 2000, XP, Vista, Windows 7, 8 or Server 2003/2008.
[Kx611413_UPD_en.zip](#)
Recently released update for Kyocera KX driver models **3051ci and UP** is available to download if you are experiencing any problems with the universal driver, download here [x501_x551_KX_Web_Installer.exe](#)

Kyocera Windows Universal Driver

*1) open web browser to www.adcchico.com
2) choose "downloads tab"
3) scroll down the screen to this file and 'click' on file name, download screen will open, choose location to save file.*

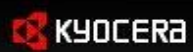
Driver installation

The screenshot shows a Windows File Explorer window with the following path: Computer > Tech Work (T:) > Downloads > Drivers > Kx611413_UPD_en > Kx611413_UPD_en. The window displays a list of files and folders. A callout box with a black border and red text contains the following instructions:

- 1) Locate where driver is downloaded and execute file to extract.
- 2) Choose "setup.exe" and start installation setup.

The callout box points to the 'Setup.exe' file in the list. The file list is as follows:

| Name | Date modified | Type | Size |
|-----------------|--------------------|-----------------------|----------|
| 32bit | 3/17/2014 12:26 PM | File folder | |
| 64bit | 3/17/2014 12:26 PM | File folder | |
| Document | 3/17/2014 12:26 PM | File folder | |
| LOT4 | 3/17/2014 12:26 PM | File folder | |
| Setup | 3/17/2014 12:26 PM | File folder | |
| Utility | 3/17/2014 12:26 PM | File folder | |
| DriverDll.dll | 2/12/2014 10:11 AM | Application extens... | 394 KB |
| KmDiscover.dll | 4/24/2013 1:20 PM | Application extens... | 172 KB |
| KmInst32.exe | 2/26/2014 1:20 PM | Application | 501 KB |
| KmInst32.pnf | 6/18/2013 10:12 AM | Precompiled Setu... | 3 KB |
| KmInst32.str | 7/27/2011 9:19 AM | STR File | 9 KB |
| KmInst64.exe | 2/26/2014 1:24 PM | Application | 592 KB |
| KmInstall.exe | 3/11/2014 2:43 PM | Application | 1,192 KB |
| KmInstall.str | 2/14/2014 12:36 PM | STR File | 26 KB |
| KmInstall4.ini | 3/7/2014 4:08 PM | Configuration sett... | 73 KB |
| KmUninstall.exe | 3/11/2014 2:43 PM | Application | 653 KB |
| KmUsb.dll | 1/21/2013 10:26 PM | Application extens... | 84 KB |
| KX.pnf | 3/11/2014 9:56 AM | Precompiled Setu... | 21 KB |
| KyoRm.ini | 8/29/2012 3:29 PM | Configuration sett... | 6 KB |
| lang.dat | 7/28/2011 4:03 PM | DAT File | 161 KB |
| lang4.dat | 2/12/2014 11:01 AM | DAT File | 119 KB |
| Setup.exe | 3/11/2014 2:42 PM | Application | 109 KB |
| upd.pnf | 8/19/2013 1:23 PM | Precompiled Setu... | 8 KB |



- Express Install**
Quickly add a device and its drivers
- Custom Install**
Add multiple devices and printing utilities
- Maintenance**
Run utility programs
- Uninstall**
Remove devices, drivers, and utilities

Select the device you want to add.

Search devices

0 devices

Use

Select

Driver

Product Library

Notice

By using or installing the device drivers and software included in this package, you agree to become bound by the terms and conditions of this license agreement.

[View License Agreement](#)



"Accept" to start installation

| Name | Date modified | Type | Size |
|-----------------|--------------------|-------------|------|
| Kx611413_UPD_en | 3/17/2014 12:26 PM | File folder | |

KYOCERA

Express Install
Quickly add a device and its drivers

Custom Install
Add multiple devices and printing utilities

Maintenance
Run utility programs

Uninstall
Remove devices, drivers, and utilities

Select the device you want to add.

⊗ ↻

Resource and Energy Saving
⊗

Resource Saving
Energy Efficiency
Duplex Printing
Power Management

Resource Saving - Paper

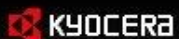
For the preservation and sustainable use of forest resources, it is recommended that recycled as well as virgin paper certified under environmental stewardship initiatives or carrying recognized ecolabels, which meet EN 12281:2002*1 or an equivalent quality standard, be used.

This machine also supports printing on 64 g/m² paper. Using such paper containing less raw materials can lead to further saving of forest resources.

*1: EN12281:2002 "Printing and business paper - Requirements for copy paper for dry toner imaging processes"

Choose "ok"

© 2014 KYOCERA Document Solutions Inc.



Express Install
Quickly add a device and its drivers

Custom Install
Add multiple devices and printing utilities

Maintenance
Run utility programs

Uninstall
Remove devices, drivers, and utilities

Select the device you want to add.

Search devices

| | | | | | | |
|-------------------------------|-------------------------------------|---------------------------------|-------------------------------------|------------------------------|------------------------------|---------------------------------|
| FS-C5030N 192.168.0.20 | TASKalfa 400ci 192.168.0.232 | FS-1135MFP 192.168.0.129 | TASKalfa 6500i 192.168.0.121 | KM-4050 192.168.0.105 | KM-4035 192.168.0.220 | FS-6525MFP 192.168.0.128 |
|-------------------------------|-------------------------------------|---------------------------------|-------------------------------------|------------------------------|------------------------------|---------------------------------|

7 devices

Use host name as port name

*Select
Copier here*

Select the features you want to use with this device.

| |
|--------------------|
| Driver Package |
|--------------------|

Start installation

Install



- Express Install**
Quickly add a device and its drivers
- Custom Install**
Add multiple devices and printing utilities
- Maintenance**
Run utility programs
- Uninstall**
Remove devices, drivers, and utilities

Select the device you want to add.

Search devices

FS-C5030
192.168.0.

7 devices
 Use host

Select the fe
Driver Pack

Installer

Installing...

Your software is being installed.

Details

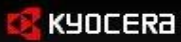
| Product | Detail |
|-------------|--|
| KX DRIVER | Installing...Kyocera TASKalfa 400ci KX |
| FONTS | Waiting to install |
| Uninstaller | Waiting to install |

Progress bar (partially filled with green)

Finish

*Self installing program
this can take 2-5 minutes
to complete installation*

Install



Express Install
Quickly add a device and its drivers

Custom Install
Add multiple devices and printing utilities

Maintenance
Run utility programs

Uninstall
Remove devices, drivers, and utilities

Select the device you want to add.



FS-C5030
192.168.0.

7 devices

Use host

Select the fe



Driver Pack

Search devices

Installer

Finished

Your software is ready to use.

Details

| Product | Detail |
|-------------|---------------------------------------|
| KX DRIVER | Installed...Kyocera TASKalfa 400ci KX |
| FONTS | Installed |
| Uninstaller | Installed |

- Print a test page
- Set Duplex as default
- Enable Status Monitor
- Show Quick Print tab

Finish Installation

Finish

Install

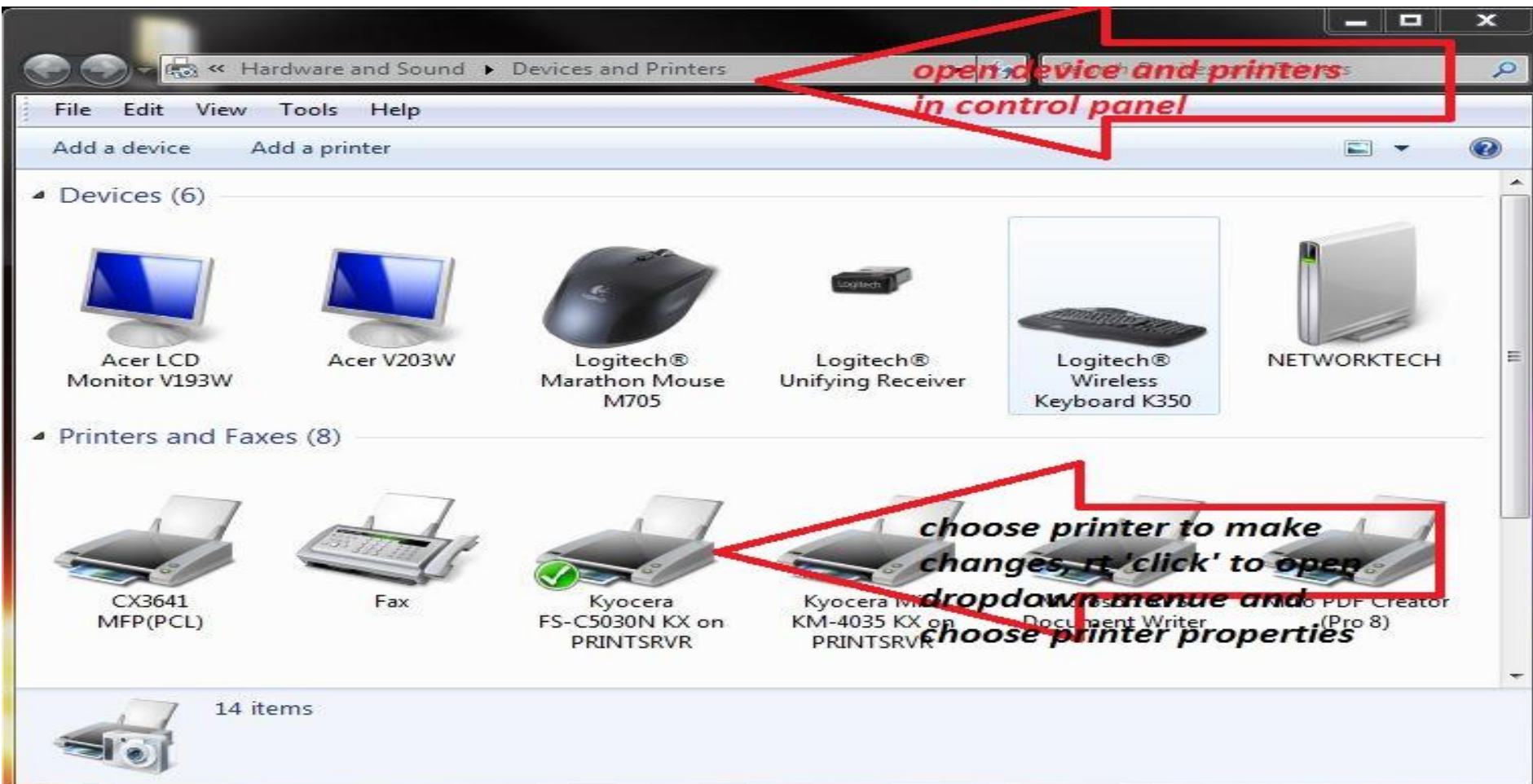
Clear check marks from "ALL" options except for "Show Quick Print Tab"

Advance Settings & Administration

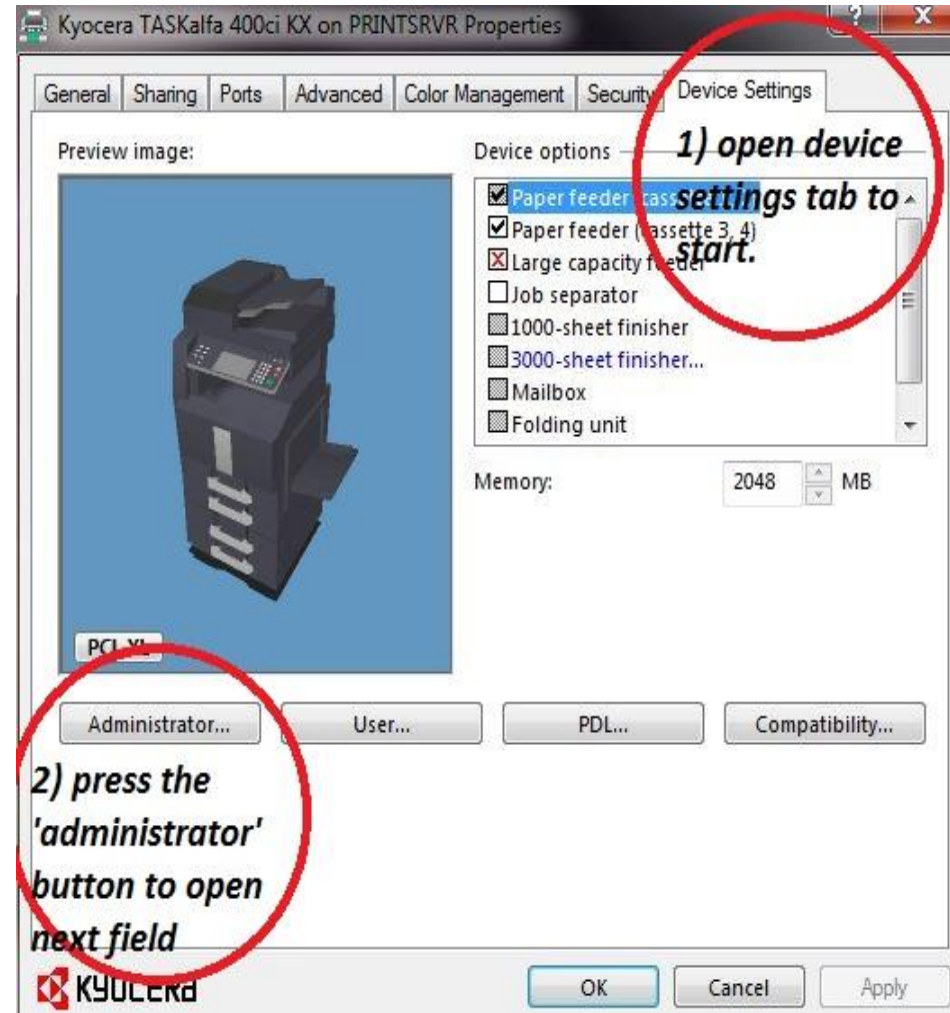
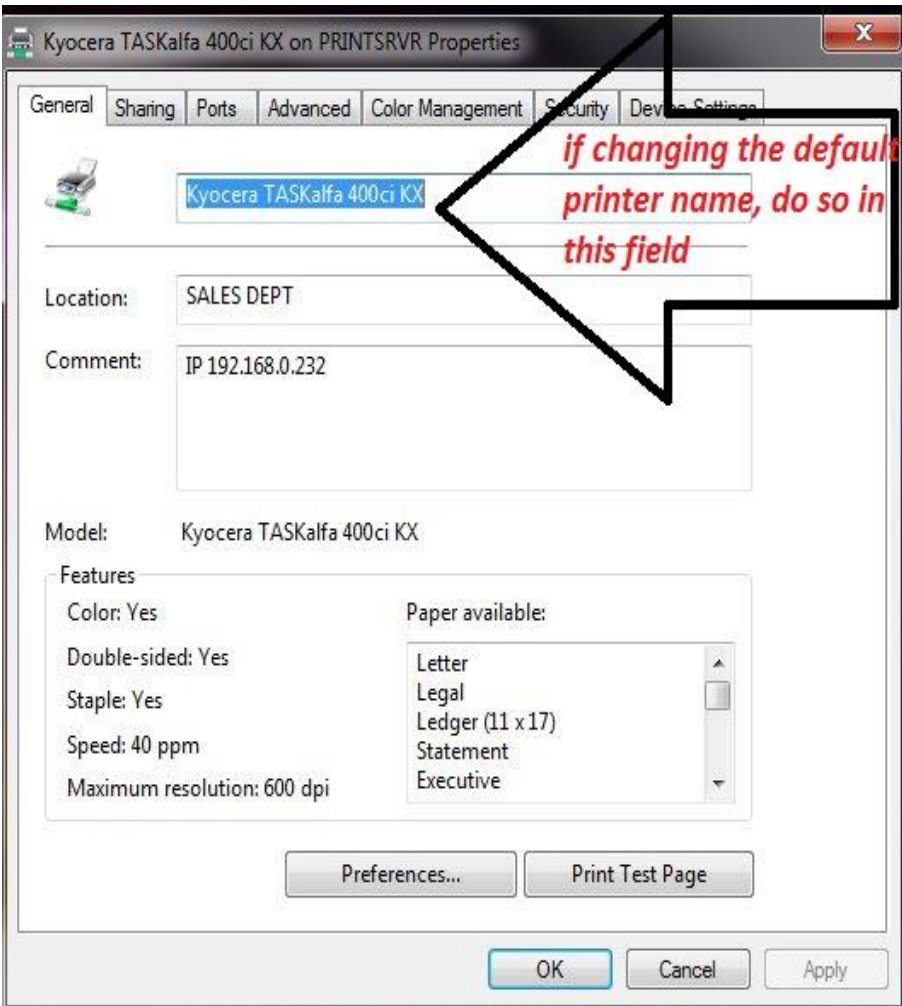
The next few slides will help to create multiple print profiles and advance settings for clients.

Special instructions for multiple printers to same user.
Used for clients with color copiers and for clients that
want to track user printing/ copying.

Open control panel and choose icon for “device and printers”



Printer properties tab, used to change default printer name and access additional property settings i.e. “device settings” & “administrator”



Administrator settings allows user to “LOCK” driver to certain functions only, or to enable the “job accounting” codes if tracking print/ copy usage.

